



TriRoof

*QUICK
TRIM GUIDE*



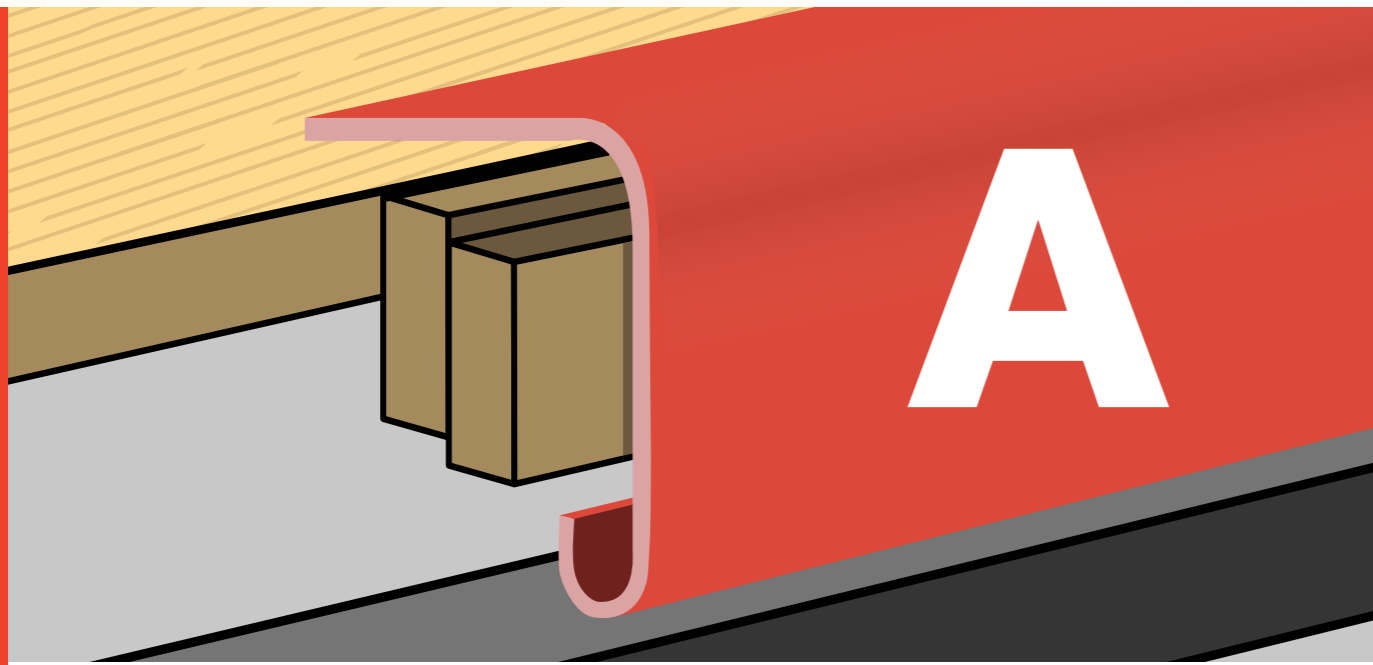
READY RECKONER

Roof Size(M ²)	Resin	Topcoat	Glass	Catalyst	Bandage 75m roll	OSB3	Trim Adhesive
10	15kg	6kg	4.5kg	210ml-840ml	1	9	1
25	37.5kg	15kg	11.25kg	525ml-2100ml	1	19	2
50	75kg	30kg	22.5kg	1050ml-4200ml	1	37	3
75	112.5kg	45kg	33.75kg	1575ml-6300ml	2	55	6
100	150kg	60kg	45kg	2100ml-8400ml	2	73	7

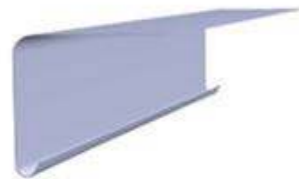
REMEMBER! Before starting any roof application always calculate the area of the roof and consider the complexity of the job before choosing your materials.

E.g. Will the area have a heavy use (foot traffic) and require 600g/m² matting or a flexible resin? What types of trims are required? Always allow for extra time and materials for any detail.

DRIP TRIM



The 'A' type trim is a Drip Trim, fitted to the lowest edge of the roof to allow the rainwater flow into the gutter.



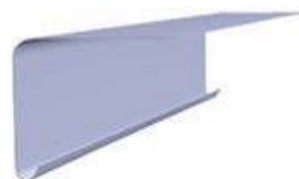
A170

Girth 170mm; Depth 65mm



(STANDARD) A200

Girth 200mm; Depth 90mm
(compatible with C1, C2 and C4 corner trims)



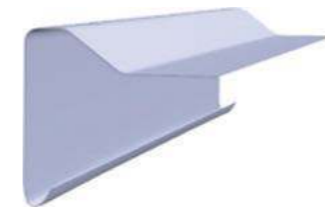
A250

Girth 250mm; Depth 140mm

UPSTAND TRIM



Upstand or 'B Type' Fibreglass Roofing Trims are fitted to the edge of the GRP roof to prevent water run-off. They are compatible with our range of Drip Trims.



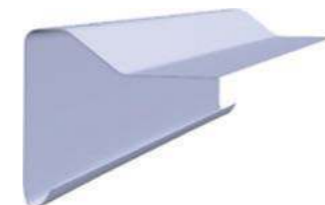
B230

Girth 230mm; Depth 105mm
(compatible with A170 trim)



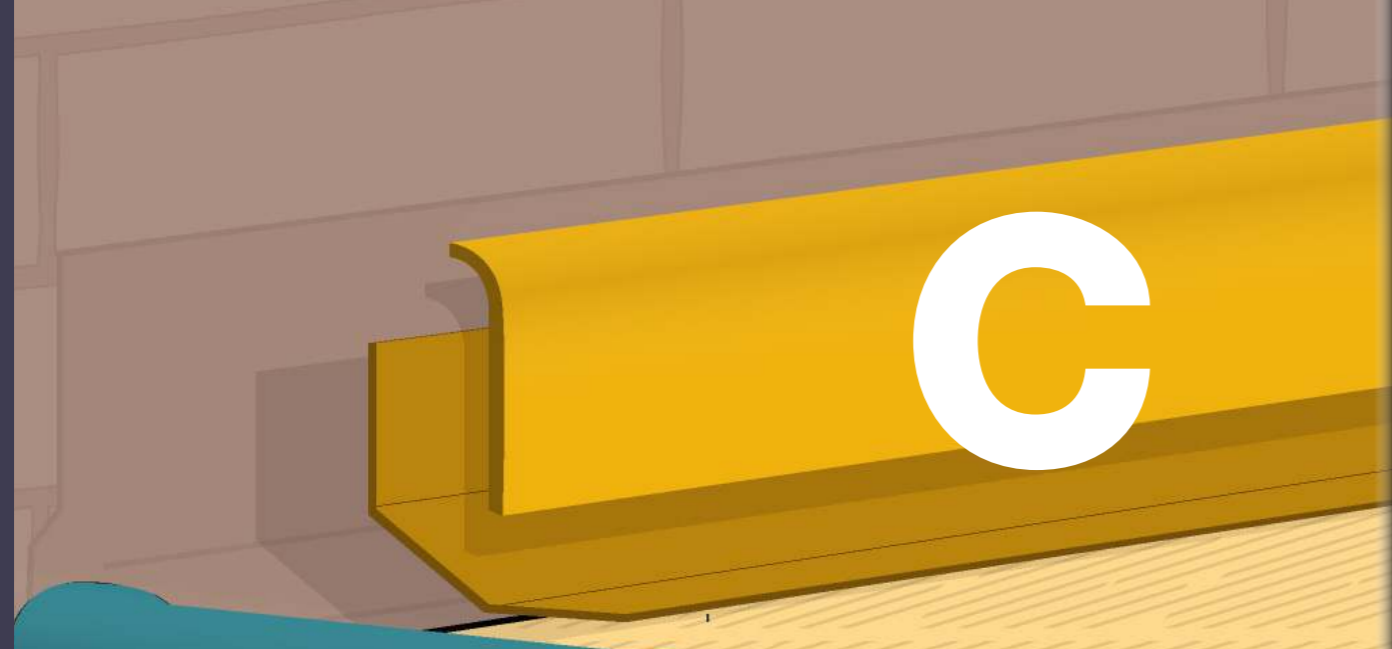
B260

Girth 260mm; Depth 125mm
(compatible with C1, C2 and C4 corners)



B300

Girth 300mm; Depth 180mm
(compatible with A250 trim)



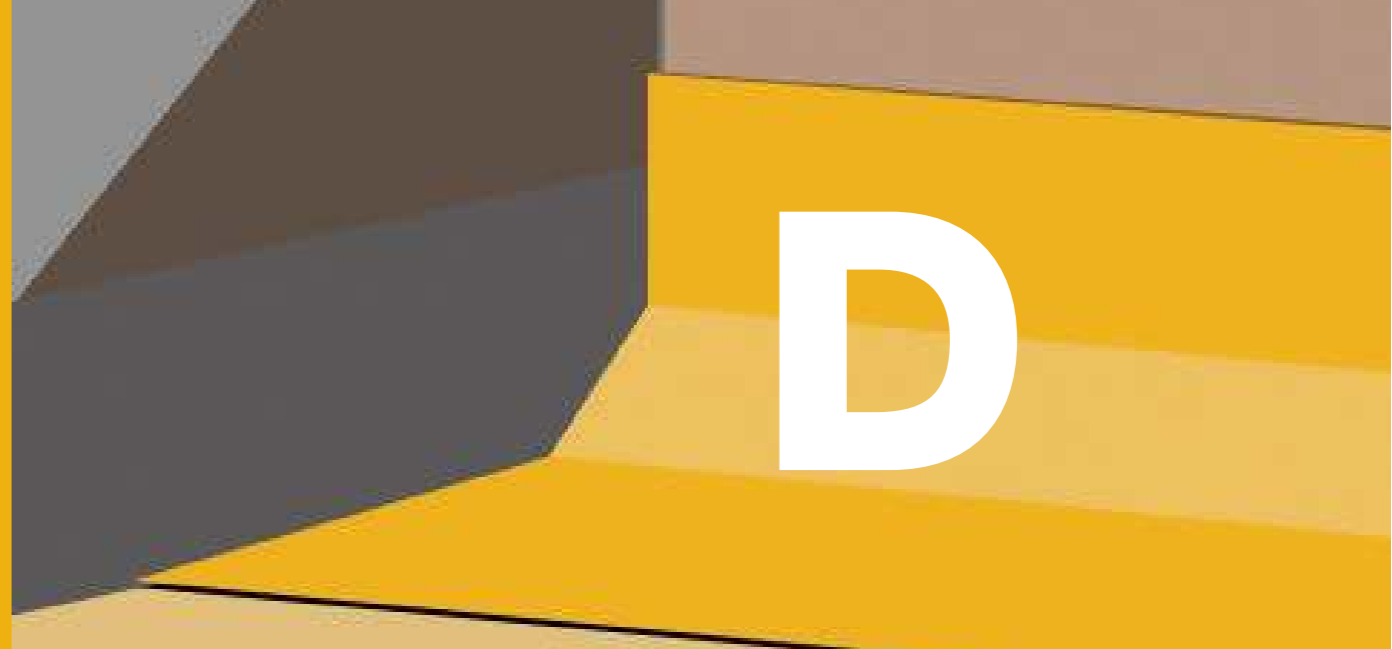
'C' or Simulated Lead Flashing Trims replace the need for traditional lead flashing. Their dark grey appearance simulates the appearance of lead. They are supplied with a non-adhesive finish and do not need any topcoat applied.



C100
Vertical cover 100mm;
Wall Penetration 35mm



C150
Vertical cover 150mm;
Wall Penetration 35mm



Wall Fillet or 'D' GRP Roof Trims are fitted to a flat roof where it meets an adjoining wall. These type of trims are usually used in conjunction with our range of C Type (Simulated Lead Flashing) Trims.



D260
Girth 260mm; Fillet 135mm &
70mm; Upstand Height 120mm



D300
Girth 260mm; Fillet 175mm &
70mm; Upstand Height 120mm

FLAT FLASHING TRIMS

F

Flat Flashing or 'F' Trims are used at the intersection of a pitched roof and flat roofs often found on dormers. The 'F' Trim should not be laminated over completely as it will crack.



F300

Width 300mm; Length 20m roll



F600

Width 600mm; Length 20m roll



F900

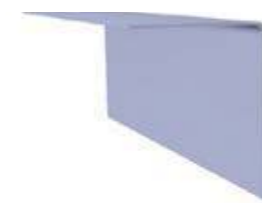
Width 900mm; Length 20m roll

ROOF TRIM

(INTERNAL & EXTERNAL)

AT

The AT195 Trims are used wherever the laminate needs to cover and which continues perpendicular to another laminated surface (e.g. steps).



AT195 EXT

Girth 195mm;

Flange widths 65mm & 105mm

(High adhesion finish on outer face for step details, cover flashings etc)

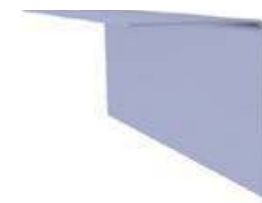


AT195 INT

Girth 195mm;

Flange widths 70mm & 105mm

(High adhesion finish on inner face for forming upstands, gutter floors etc)



AT300 EXT

Girth 300mm;

Flange widths 90mm & 240mm

Extra-long External Angle Trim for step/block details

CORNER TRIMS

Corners Trims offer a smooth finish and are placed above other trims. The joint is then bandaged over.



C1
For use with A200 and B260 profiles to form a left- and right-hand corner.



C2
For use where a flat roof meets an abutting wall. Use with A200, B260, and D260 profiles.



C3 INT
Internal corner fillet for D260 fillet trim.



C3 EXT
External corner fillet trim for D260 fillet trim.



C4
For use with A200 and B260 profiles to form a left- and right-hand corner.

CORNER TRIMS



C5
Closure for use with E280 Trim.



C6
Closure trim for use with E35/40 trim.



C7 INT
Internal Corner for use with C100 & C150 Lead Flashings.



C7 EXT
External Corner for use with C100 & C150 Lead Flashings.



C8B
For use on expansion joints. Compatible with E280 & B Trims.

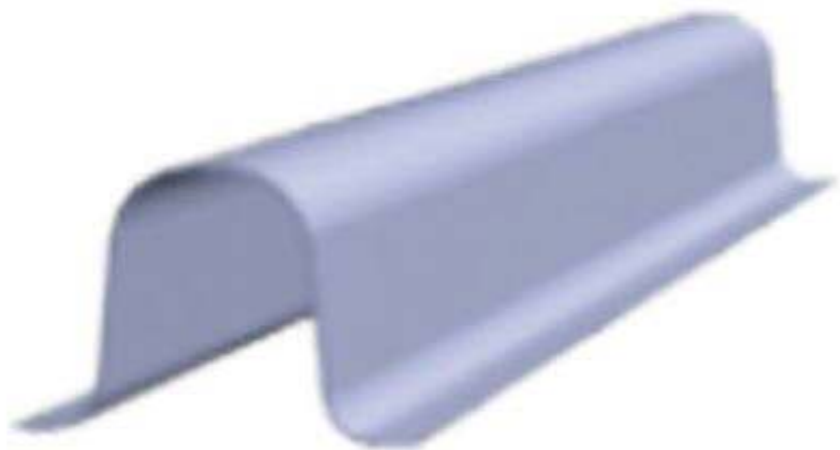


C9A
For use on expansion joints. Compatible with E280 & A Trims.



C11D
For use on expansion joints. Compatible with E280 & D Trims.

E35/40

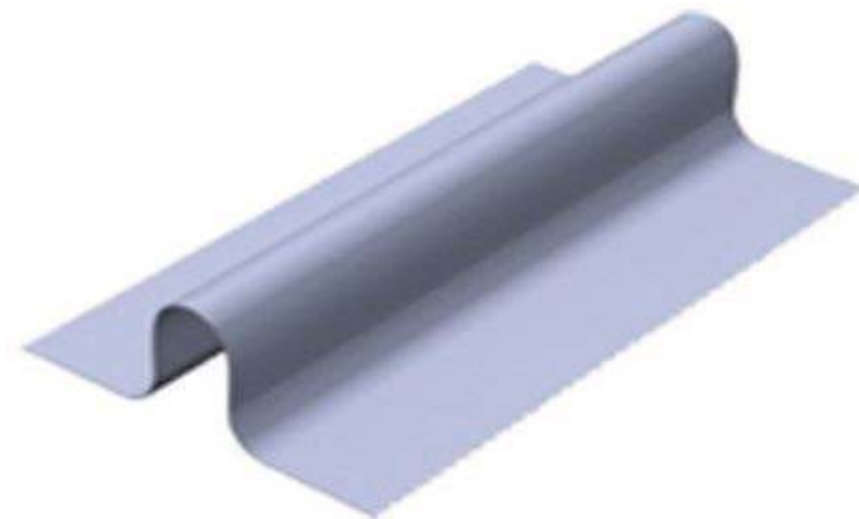


SIMULATED ROLLED LEAD JOINT

Used to simulate the appearance of raised rolled lead joint and provides expansion.

**Girth 130mm; Flanges 20mm;
Height 40mm ; Roll width 35mm**

E280



EXPANSION JOINT

The E280 is used on fibreglass flat roofs which are 50 square metres and over. It can also be used to create rolls on any ridge details. It is compatible with C5 preformed closures.

**Girth 280mm; Flanges 90mm;
Height 50mm**

G180

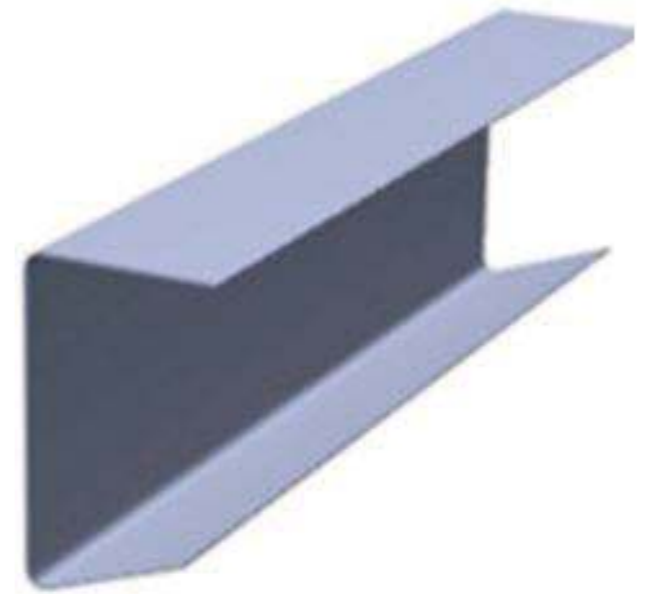


GULLY TRIM

The Gully Trim/Expansion Joint is generally used in fibreglass roofs over 50sqm for expansion purposes. It is also used for drainage.

**Girth 180mm; Flanges 30mm;
Depth 15mm; Trough width 80mm**

S500



SOFFIT ROOFING TRIM

The S500 Soffit Trim is used to encapsulate a concrete or similar deck edge.

Girth 450mm; Depth 225mm